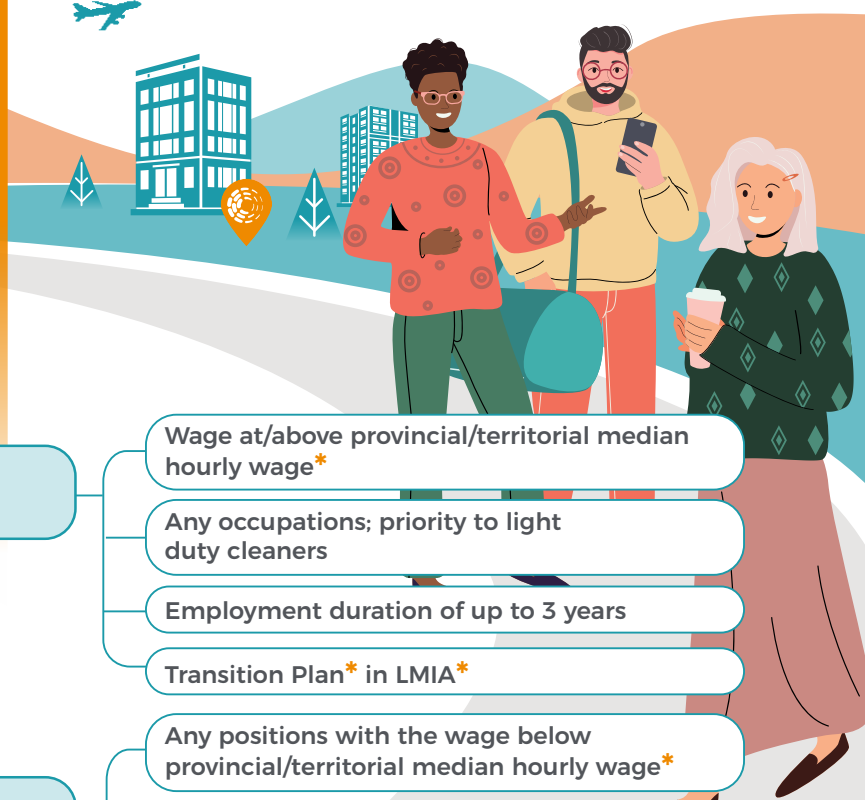


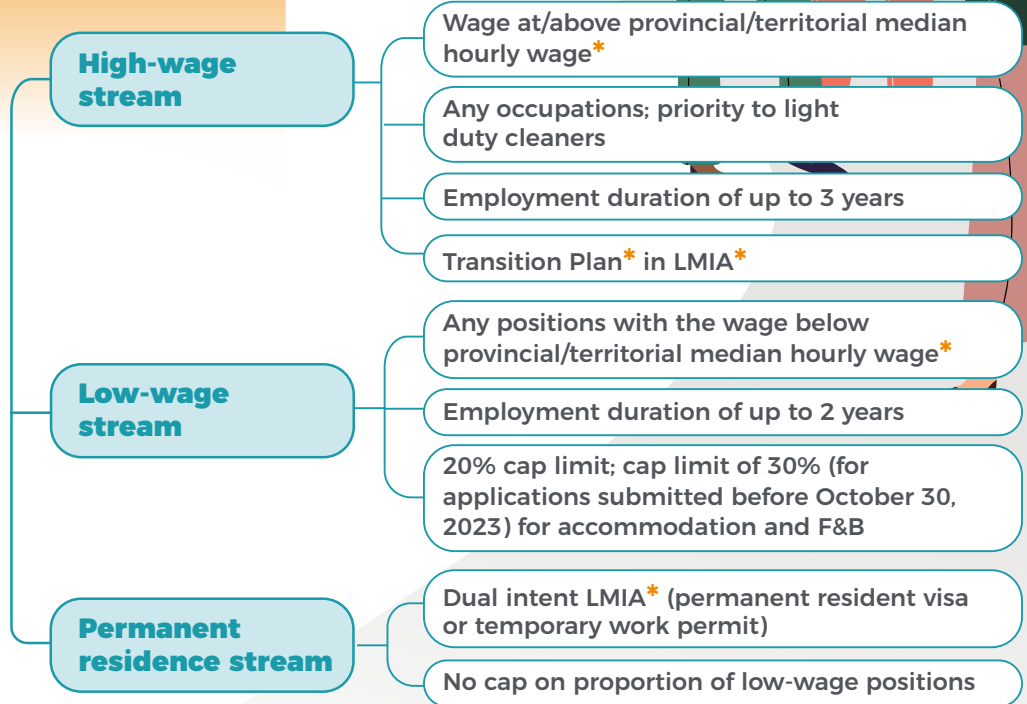
HIRING INTERNATIONAL TALENT FOR TOURISM JOBS



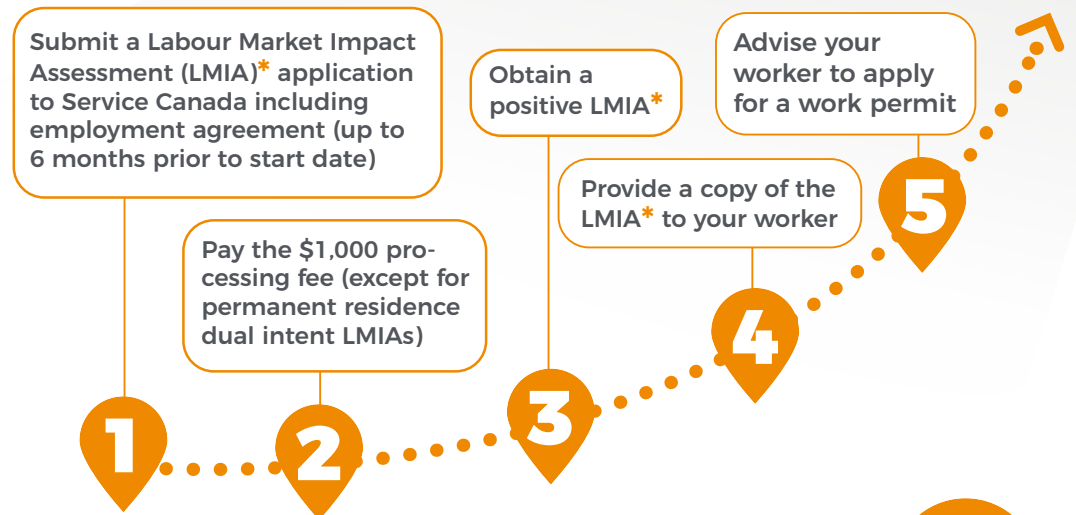
Tap into the Temporary Foreign Worker Program (TFWP)



TFWP STREAMS



STEP-BY-STEP NAVIGATING THE TFWP



* Definitions on page 2





Positive LMIA's are valid for 18 months from the date of issuance

LMIA* average processing time

High-wage stream



34 business days

Low-wage stream



36 business days

Permanent residence stream



17 business days

Employment Agreement (EA): Information must match offer of employment conditions. You can obtain EA templates from ESDC Employer Contact Centre*.



RESOURCE TOOLBOX

Definitions & Resources

Labour Market Impact Assessment: https://www.canada.ca/en/services/immigration-citizenship/helpcentre/glossary.html#labour_market_impact_assessment

How To Get an LMIA: <https://www.canada.ca/en/immigration-refugees-citizenship/services/work-canada/hire-temporary-foreign/find-need-labour-market-impact-assessment.html#get>

National Occupational Classification (NOC): https://www.canada.ca/en/services/immigration-citizenship/helpcentre/glossary.html#national_occupational_classification

TEER category: <https://www.canada.ca/en/services/immigration-citizenship/helpcentre/glossary.html#teer>

Transition Plan: <https://www.canada.ca/en/employment-social-development/services/foreign-workers/median-wage/high/requirements.html#h2.5>

Provincial or Territorial Median Hourly Wage: <https://www.canada.ca/en/employment-social-development/services/foreign-workers/median-wage.html>

High-Wage Stream: <https://www.canada.ca/en/employment-social-development/services/foreign-workers/median-wage/high.html>

Low-Wage Stream: <https://www.canada.ca/en/employment-social-development/services/foreign-workers/median-wage/low.html>

Permanent Residence Stream: <https://www.canada.ca/en/employment-social-development/services/foreign-workers/permanent.html>

ESDC Employer Contact Centre: <https://www.canada.ca/en/employment-social-development/corporate/contact/employer-contact-center.html>



DISCLAIMER

The information contained herein was obtained by Tourism HR Canada by sources believed to be reliable, however due to the changing nature of immigration programs and the possibility of human or mechanical error, Tourism HR Canada does not guarantee the accuracy, adequacy, or completeness of any of the information. The publisher and contributors shall not be held liable in any degree for any loss or damage by an omission, error, misprint, or ambiguity. The information should be used for general guidance and not as professional or legal advice. Individuals should seek qualified legal counsel relevant to their particular circumstances before any action or decision is taken on the basis of any material provided by Tourism HR Canada.

Last Updated: June 2023



TourismHR.ca
info@tourismHR.ca

Funded by the
Government
of Canada

Canada

