

Food & Beverage Sector Injury Profile

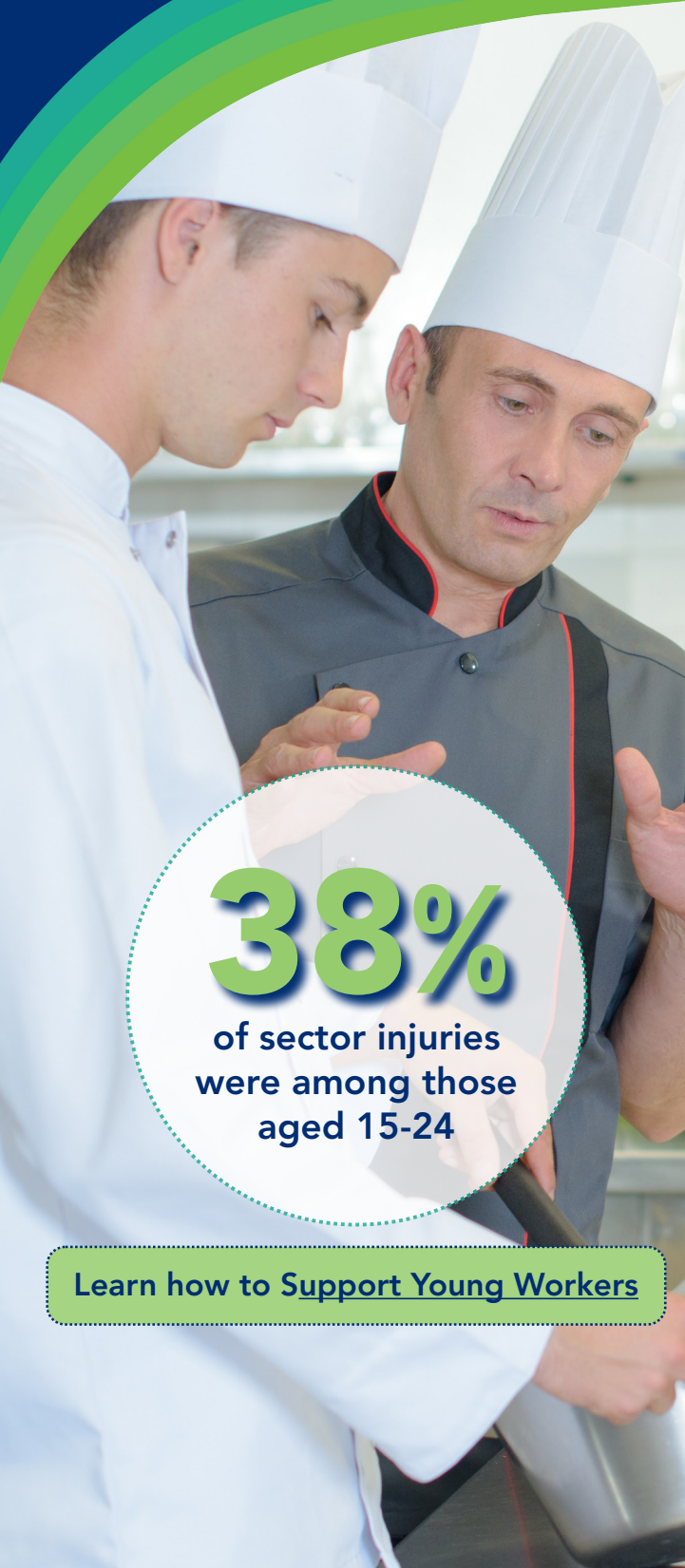
761035 - Restaurant or Other Dining Establishment



go2HR has curated this injury profile using data sourced from WorkSafeBC to help provide key insights on injuries in BC's Food and Beverage Industry as of 2024. We also offer our H&S Snapshot service that can show how your safety stats measure up to these and more.

Contact us to book yours.

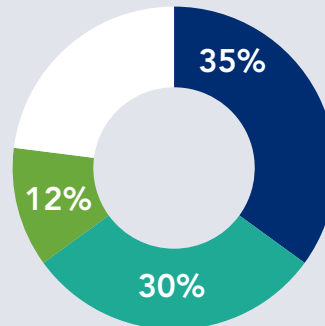
Industry Base Rate 2026
\$0.58 ↓ 25.6% from 2025



38%

of sector injuries
were among those
aged 15-24

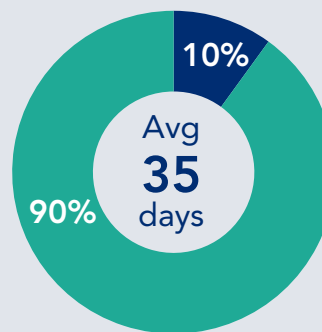
Learn how to Support Young Workers



Who is Getting Injured?

- Cooks / Chefs
- Other Kitchen Staff
- Servers
- All Others

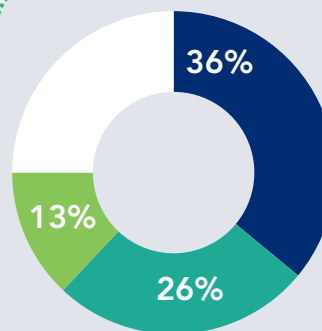
Ensure your workers know the Safety Basics



Time-Loss Claim Duration

- 26+ Weeks
- Less than 26 Weeks

Create a thorough Return to Work Program



Common Injuries

- Muscle Strains
- Cuts/Scrapes
- Heat Burns
- All Others

Learn about Kitchen Safe Work Practices